



MONTHLY MEMBERSHIP PROGRESS REPORT

District 2 X3

Results as of: 12/31/2017

GMT: JOE AL PICONE

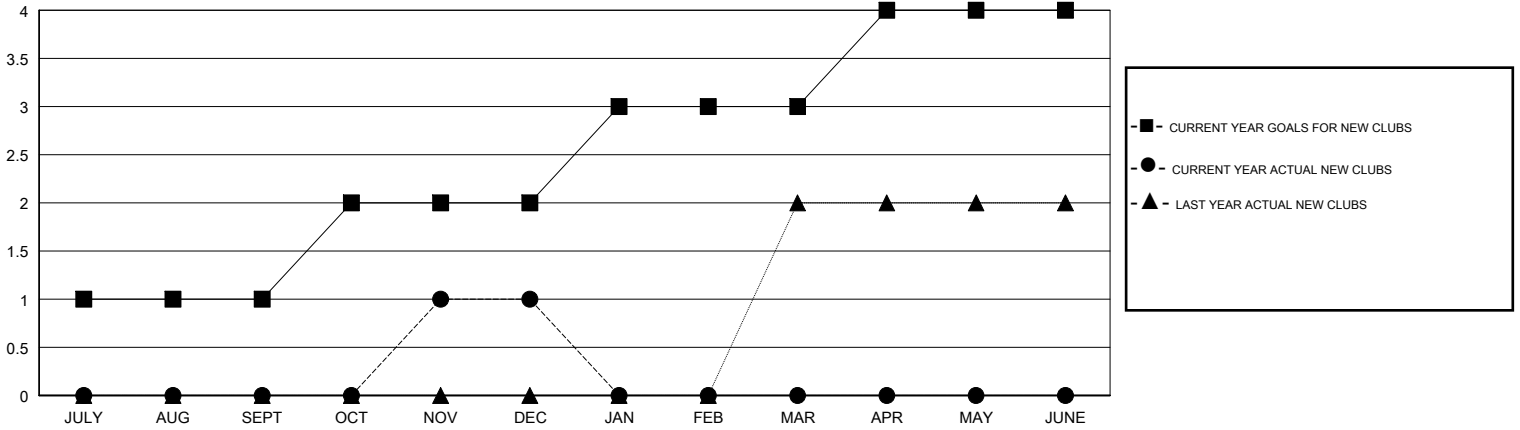
LOCATION TEXAS

GMT CA

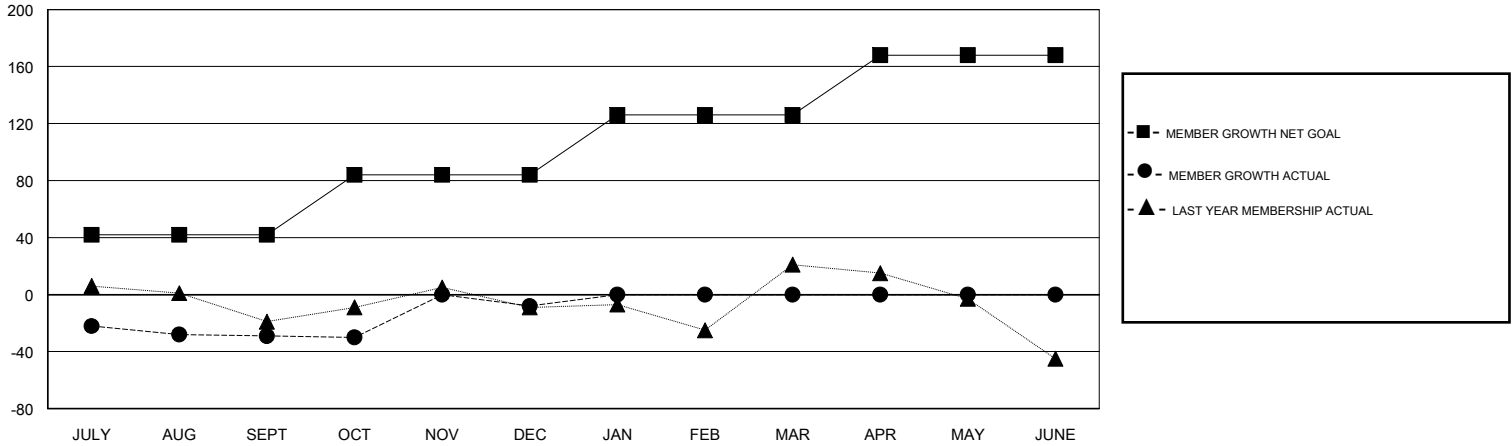
Clubs			
RESULTS FOR 2017-2018			
QUARTER	NEW CLUB GOAL	NEW CLUBS	DROPPED CLUBS
JULY/AUG/SEPT	1	0	3
OCT/NOV/DEC	1	1	0
JAN/FEB/MAR	1	0	0
APR/MAY/JUNE	1	0	0

Members			
RESULTS FOR 2017-2018			
QUARTER	MEMBER GROWTH NET GOAL	MEMBER GROWTH ACTUAL	DROPPED MEMBERS ACTUAL (including transfers)
JULY/AUG/SEPT	42	37	58
OCT/NOV/DEC	42	75	54
JAN/FEB/MAR	42	0	0
APR/MAY/JUNE	42	0	0

GOALS AND ACTUAL NEW CLUBS CUMULATIVE



GOALS AND ACTUAL MEMBERS CUMULATIVE



DROPPED CLUBS: 3

29 CLUBS OF 56 ADDED 1 OR MORE NEW MEMBERS

GENDER DISTRIBUTION	
MALE	1,012 (66.40%)
FEMALE	512 (33.60%)
Women Percentage Fiscal Year Goal: 40%	

DROPPED MEMBERS	
DECEASED	10
CLUB CANCELLED	0
OTHER	102
TOTAL	112

[CLICK HERE FOR CUMULATIVE MEMBERSHIP DATA](#)

TOTAL FAMILY UNIT MEMBERS	182
FAMILY MEMBERS PAYING HALF DUES	92